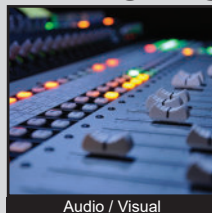


KAG SERIES DIP SWITCH

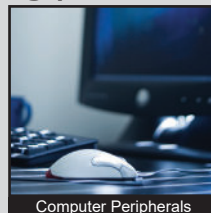
ANTI-VANDAL SWITCHES
DETECTOR SWITCHES
DIP SWITCHES
KEYLOCK SWITCHES
NAVIGATION SWITCHES
PUSHBUTTON SWITCHES
ROCKER SWITCHES
ROTARY SWITCHES
SLIDE SWITCHES
SNAP ACTION SWITCHES
TACTILE SWITCHES
TOGGLE SWITCHES
CAP OPTIONS



APPLICATIONS / MARKETS



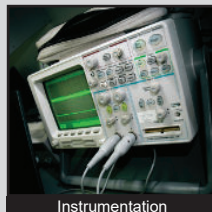
Audio / Visual



Computer Peripherals



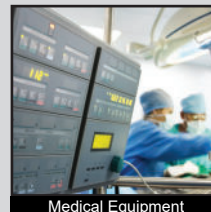
Consumer Electronics



Instrumentation



Telecommunication



Medical Equipment

RoHS

SPECIFICATIONS

Electrical Rating: 100mA @ 50VDC Non-Switching
25mA @ 24VDC Switching

Life Expectancy: 1,000 Cycles each circuit

Contact Resistance: 50mΩ Max.

Insulation Resistance: 100 MΩ Min. at 500VDC

Dielectric Strength: 500VAC for 1 min.

Operating Temperature: -40°C to 105°C

Storage Temperature: -40°C to 105°C

Travel: 0.9mm in each direction

Contact Arrangement: SPST each position

FEATURES & BENEFITS

- Gullwing (SMT) termination option
- Tube or Tape & Reel packaging options
- Top tape seal option with recessed actuator
- Low profile
- 1,2,4,8, or 10 positions
- Gold contacts
- Switches are supplied with all poles in "OFF" position

PART NUMBER CONFIGURATOR

Series	No. of Positions	Actuator	Termination	Contact Material	Packaging
<input type="text" value="KAG"/>	<input type="text" value="01"/> <input type="text" value="02"/> <input type="text" value="04"/> <input type="text" value="08"/> <input type="text" value="10"/>	<input type="text" value="L"/> <input type="text" value="S"/> <input type="text" value="T"/>	<input type="text" value="G"/>	<input type="text" value="G"/>	<input type="text" value="T"/> <input type="text" value="R"/>
	01 - 1 position 02 - 2 positions 04 - 4 positions 08 - 8 positions 10 - 10 positions	L - Extended S - Recessed without top tape seal T - Recessed with top tape seal	G - Gullwing	G - Gold	T - Tube R - Tape & Reel (Gullwing only)

Specifications subject to change without notice 8.13.2024



E-SWITCH®

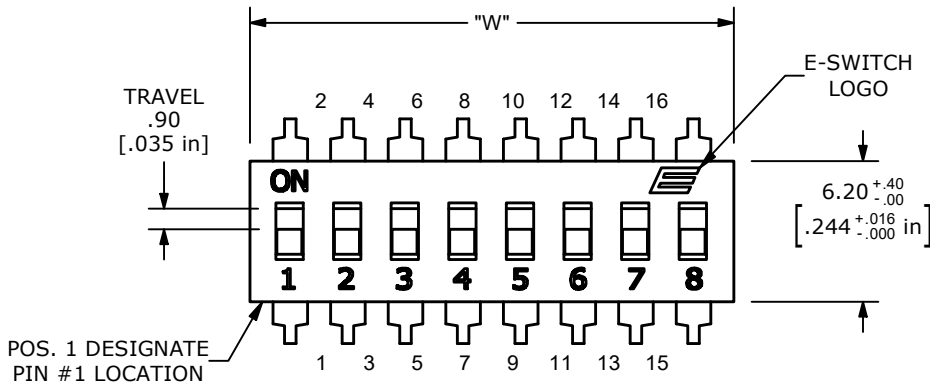
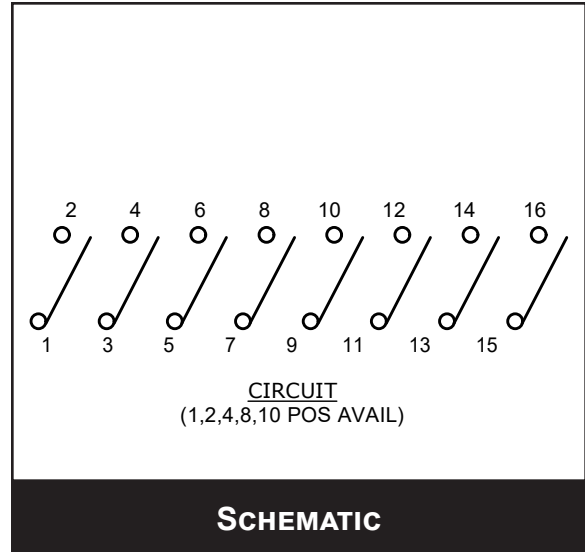
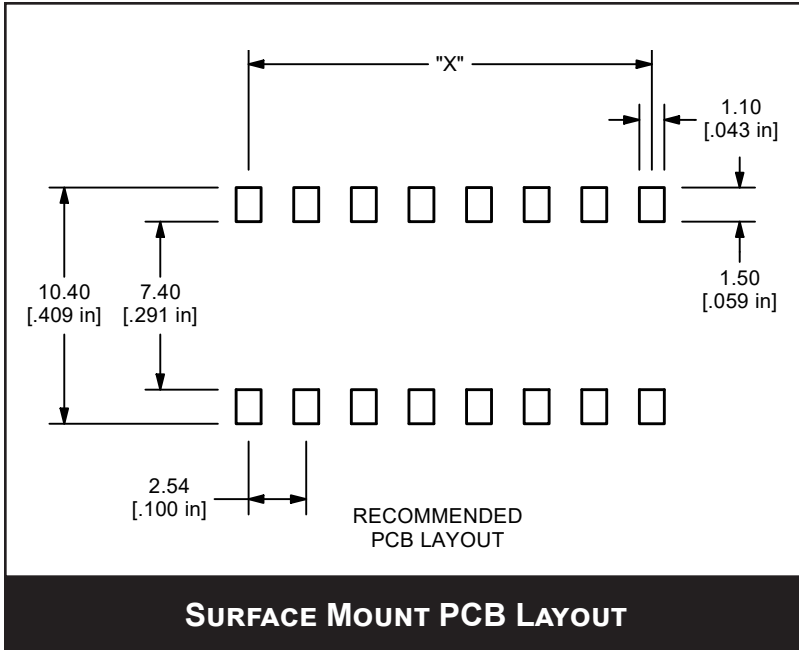
www.e-switch.com

800.867.2717

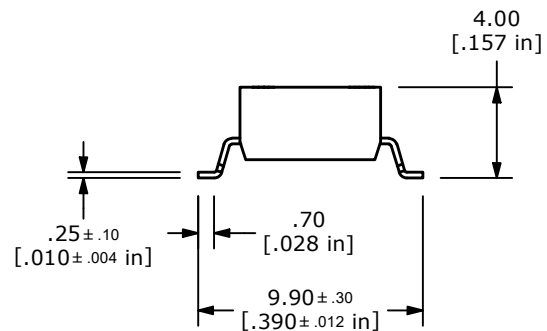
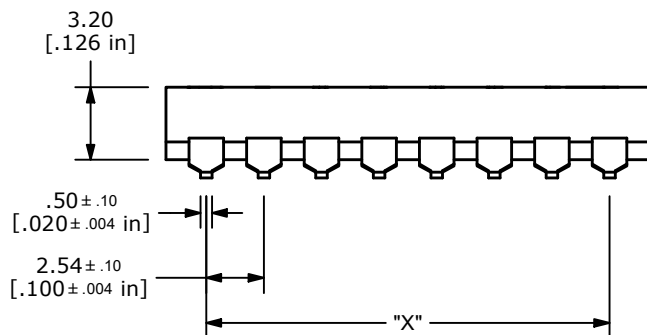
1

KAG SERIES DIP SWITCH

BODY DIMENSIONS GULLWING TERMINATION



NO. OF POS	DIM W	DIM X
1	3.54	N/A
2	6.08	2.54
4	11.16	7.62
8	21.32	17.78
10	26.40	22.86



ANTI-VANDAL SWITCHES
DETECTOR SWITCHES
DIP SWITCHES
KEYLOCK SWITCHES
NAVIGATION SWITCHES
PUSHBUTTON SWITCHES
ROCKER SWITCHES
ROTARY SWITCHES
SLIDE SWITCHES
SNAP ACTION SWITCHES
TACTILE SWITCHES
TOGGLE SWITCHES
CAP OPTIONS