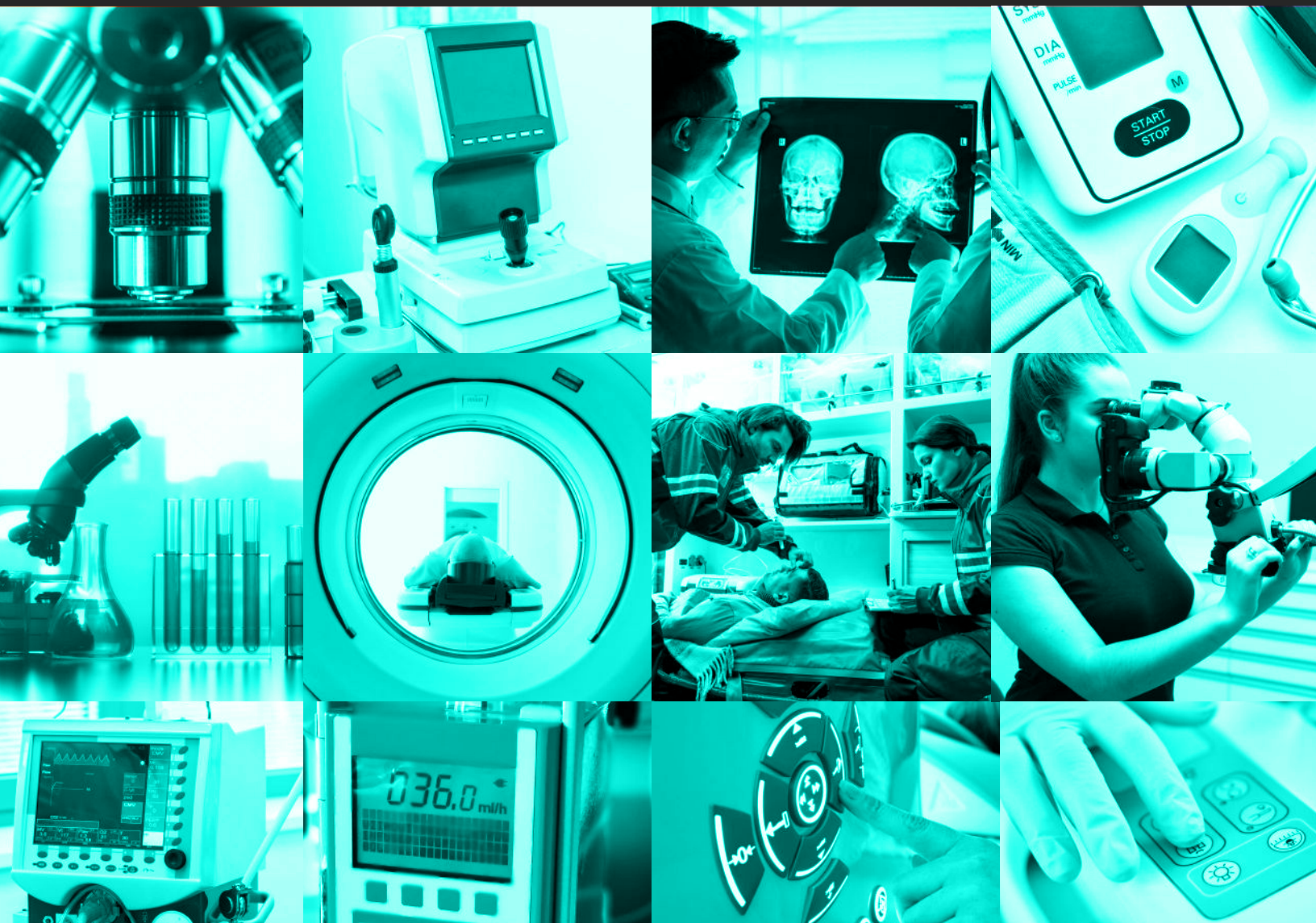
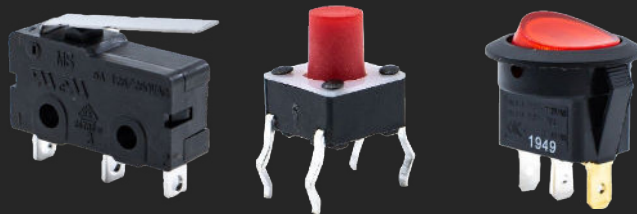


# MEDICAL / DENTAL MARKETS





# MEDICAL / DENTAL MARKETS

E-Switch provides a robust line of switch products, from pushbuttons and tact switches, to rockers and toggles. Each switch family provides multiple features suitable for medical-related devices and equipment. Whether the application requires moisture-resistance, illumination, or an anodized finish, E-Switch is sure to have a switch meeting the necessary design specifications.

NOTE: The most requested switches are shown for these types of applications. However, several switches can fit your requirements. Please visit [www.e-switch.com](http://www.e-switch.com) to view our entire line of switches; check out Virtual Applications on our website or call 800-867-2717 for customer service assistance.

## ANTI-VANDAL SWITCHES

E-Switch offers a wide range of Anti-Vandal switches more than capable of handling the harsh demand of the medical industry. This hardy switch category doesn't just offer captivating appearances, they have the quality mechanics to back it up. Long life expectancies in either momentary or latching configurations, IP-certified ratings and more illumination options than the Vegas strip, the Anti-Vandal series might just be the switch you're looking for.

*Most requested anti-vandal switches are shown; visit [e-switch.com](http://e-switch.com) to see full line in Anti-Vandal series.*



ULV8

PV8

PV6

PV3



Diagnostic Station



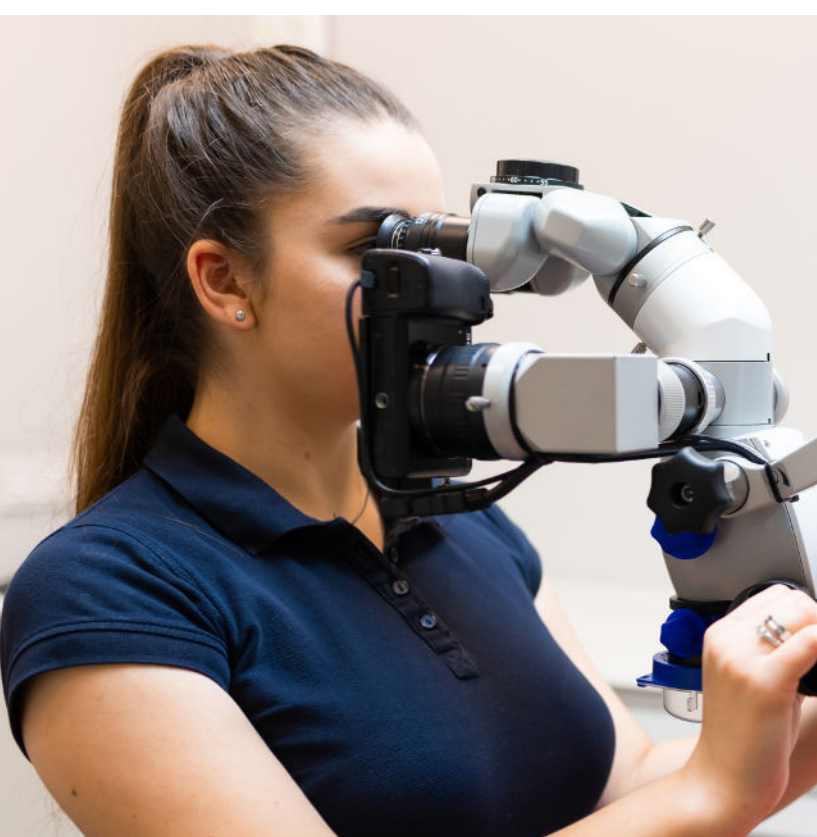
Incubator



CT Scan



Ambulance



## ROCKER SWITCHES

Rocker switches provide a firm back and forth motion upon actuation of the switch, which makes them frequently requested as an on/off power switch on medical devices. Rockers are commonly used to directly power a device. They are available in many shapes, sizes and colors, with both standard and custom symbols available on the actuator. Rocker switch illumination may be controlled on a separate circuit, or be dependent on switch position, based on what series is chosen. Available termination options include SMT, PCB pins, solder lugs, screw terminals, and quick connect tabs.



RR5

RB1

RR1

R1973



## PUSHBUTTON SWITCHES

Pushbutton switches are available in many shapes, sizes and illumination options. Several pushbuttons have cap options. The illuminated pushbuttons are popular on medical related equipment as a visual power source indicator. Pushbuttons offer the following termination options: SMT, PCB pins, solder lugs, screw terminals, and quick connect tabs



ULP

RP8100

LP1



Defibrillator



IV Pump



Ventilator



Electric Wheelchair



## TACTILE SWITCHES

Tactile switches come in many shapes, sizes and illumination options. They come in surface mount, right angle SMT, and thru-hole termination options. Tact switches are particularly suitable for a wide range of medical equipment and devices because of their tactile response. The illuminated tact switches are popular on medical related equipment as a visual power source indicator.



TL3315

TL1105

TL1240

## SNAP ACTION AND TOGGLE SWITCHES

Snap Action switches provide long operating life and numerous operating force options, which makes them suitable for repetitive use situations. Toggle switches offer a variety of switching functions and bushing options to fit many equipment requirements. A product designer for medical devices and medical-related equipment can utilize a myriad of electro-mechanical switches based on desired features. E-Switch offers the breadth and depth of switches to satisfy the requirements.



MS



TS



SS



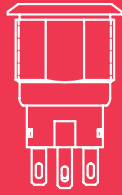
100



ST1



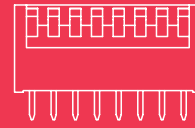
E-SWITCH®



ANTI-VANDAL



DETECTOR



DIP



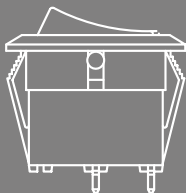
KEY LOCK



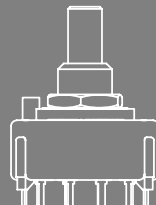
NAVIGATION



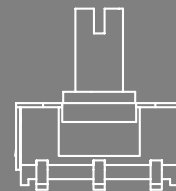
PUSHBUTTON



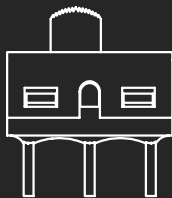
ROCKER



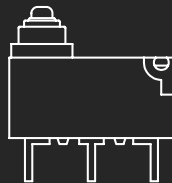
ROTARY



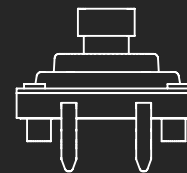
TACTILE



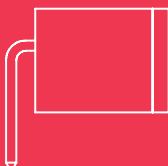
SLIDE



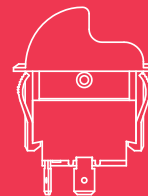
SNAP ACTION



TOGGLE



TILT



TRIGGER

2022 E-Switch, Inc. All rights reserved.

E-switch Inc. is a wholly-owned subsidiary of Stein Industries, Incorporated

[www.e-switch.com](http://www.e-switch.com)