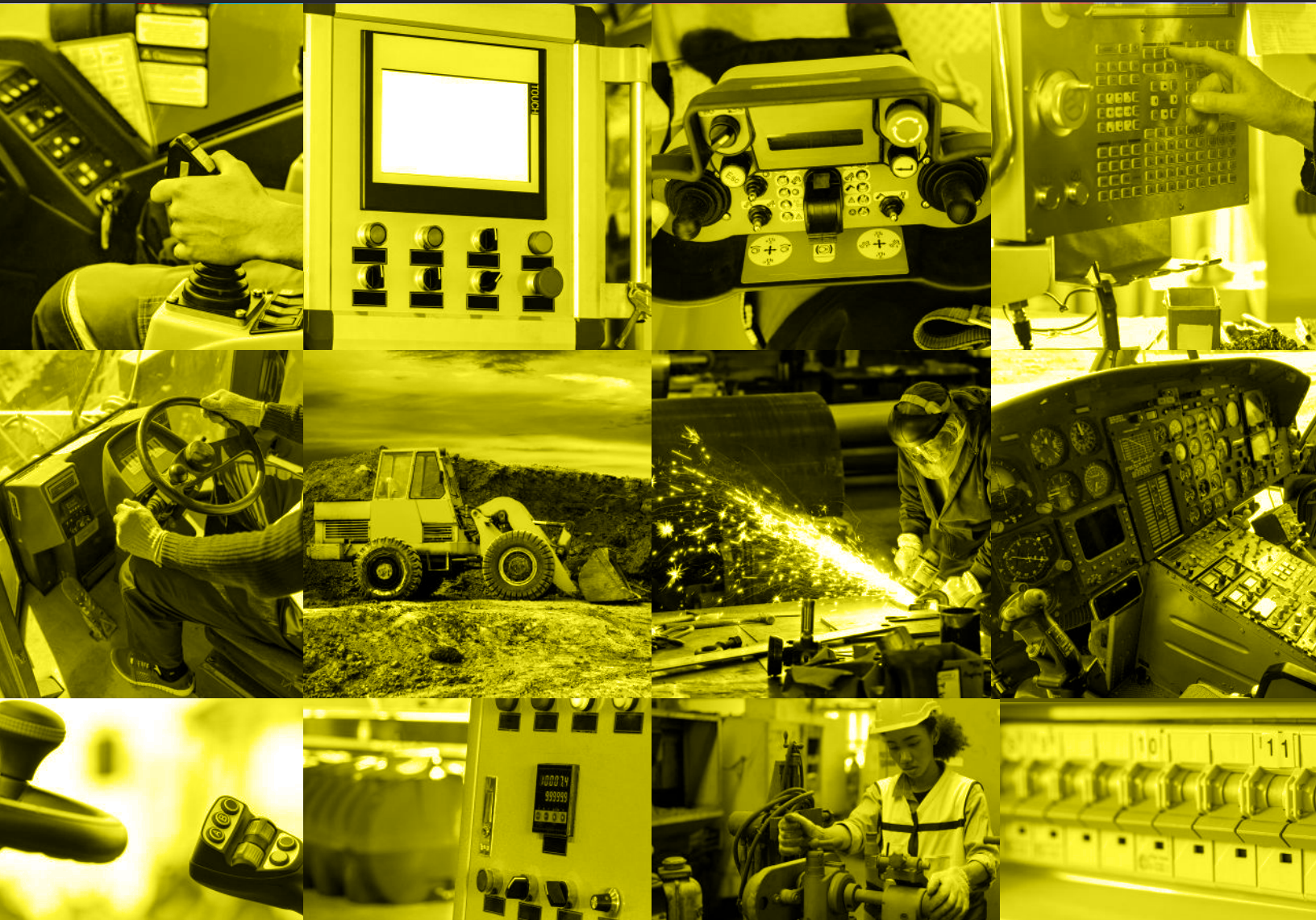
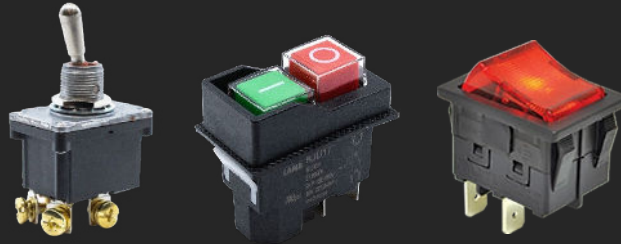




INDUSTRIAL MARKETS



INDUSTRIAL MARKETS

E-Switch provides a broad range of switches that withstand the rugged, harsh and high demand environments found in the industrial market where reliability is a key factor. Industrial equipment and devices vary from test & measurement tools, factory automation machines, safety or security systems, recreational and agricultural vehicles, and commercial equipment. More complex equipment and systems often utilize several types of switches on the operational control panels. From tact, toggles, pushbuttons and rockers, selecting the right switch depends on the application requirements. A product designer can utilize a myriad of electro-mechanical switches based on desired features. E-Switch offers the breadth and depth of switches to satisfy the requirements.

NOTE: The most requested switches are shown for these types of applications. However, several switches can fit your requirements. Please visit www.e-switch.com to view our entire line of switches; check out Virtual Applications on our website or call 800-867-2717 for customer service assistance.

ANTI-VANDAL SWITCHES

Aesthetically pleasing and designed with tamper proof properties, E-Switch's Anti-Vandal series can withstand rugged use and tolerate harsh elements. E-Switch offers an extensive array of Anti-Vandal switches, which are available in many shapes, sizes, functions, finishes, and illumination options. All Anti-Vandal switches are IP65 or IP67 certified.



ANTI-VANDAL APPLICATIONS

- Intercom Boxes
- Security Doors & Gates Code Box
- Fire Alarm Systems
- Power Equipment On/Off Switch
- Machinery/CNC Controls
- Video Surveillance Control Panels
- Lighting Controls



WIRE EXTENSIONS

E-Switch now offers several pre-wired options across many of our most popular Anti-Vandal switches. Selecting the right terminal option for your product assembly process will provide time and costs savings from:

- No need to second-source wire leads and assembly house.
- Reduce labor cost by ordering your switches pre-wired before arrival on your manufacturing floor.
- Decrease product assembly time with the ease of installing behind the panel options.



PV6 PRE-WIRED



SV8 PRE-WIRED



ULV7 MOLDED BOOT

PUSHBUTTON SWITCHES

E-Switch provides pushbutton switches in a wide assortment of shapes, sizes, functions, finishes, and illumination options. We also offer an extensive range of high-power switches rated up to 24 amps, well-suited to the industrial market. Many pushbutton switches are IP certified against dust and moisture. Besides the typical finger-activated pushbutton switch, the push-pull style and the foot-activated switch are frequently utilized in industrial markets.

PUSHBUTTON APPLICATIONS

- Lighting Control Systems
- Foot Switch Control
- Equipment On/Off Power
- HVAC Equipment
- Motion Detector Controls
- Security Camera Systems
- Programmable Power Supplies
- Battery Charging Devices
- Air Traffic Communication System



PP1



KJD17



PA4



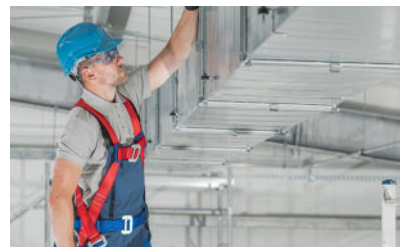
P16



FS570



LP16



ROCKER SWITCHES

Frequently requested as an on/off power switch, rockers are commonly used to directly power a device and provide a firm touch upon actuation. They are available in many shapes, sizes and colors, with both standard and custom symbols available on the actuator. Rocker switch illumination may be controlled on a separate circuit, or be dependent on switch position, based on what series is chosen. Available termination options include SMT, PCB pins, solder lugs, screw terminals, and quick connect tabs.

ROCKER APPLICATIONS

- Surge Protectors
- Battery Charging Devices
- Equipment On/Off Switch
- Power Distribution Control Panels
- Safety Utility Switch
- Equipment Dash Boards
- Agricultural Equipment
- Utility Vehicles



R7



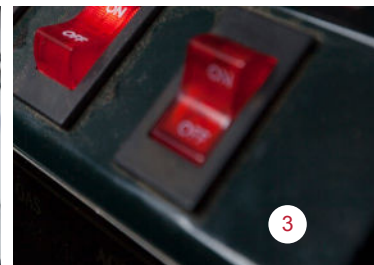
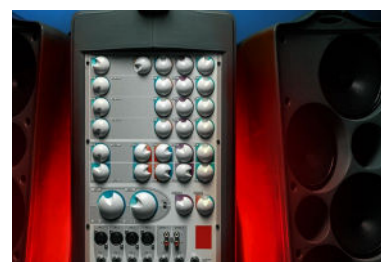
RB4



RBW2



RR1



TACTILE SWITCHES

Tact switches are used in a wide range of industrial-related machines, equipment, and devices because of their tactile response. These switches come in many shapes, sizes, illumination options, and termination options including surface mount, right angle SMT, and thru-hole.



TL6100



TL1105



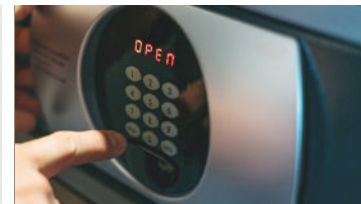
TL1260



TL3145

TACTILE APPLICATIONS

- Remote Control Devices
- Programmable Light Systems
- Thermostats
- Intrusion Detectors and Alarm Systems
- Video Surveillance Control Panels
- Instruments/interface Control Panels



SLIDE SWITCHES

A slide switch is a two or more position switch used to control the current flow in a circuit. E-Switch carries slide switches of all different sizes, and functions, with various terminals to suit a variety of applications.



500



500R

SLIDE APPLICATIONS

- Vehicle Transponder Devices
- Networking Hubs
- Routers
- Transmitting Devices
- Industrial Vacuuming Equipment

TOGGLE SWITCHES

Toggle switches offer a variety of switching functions and bushing options to fit many equipment requirements.



ST1



ST3



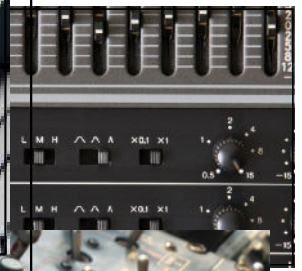
100



200

TOGGLE APPLICATIONS

- Emergency Alert System
- Reset or On/Off Switch
- Wireless Networking Switch
- Controllers
- Electrical Instruments



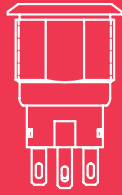
KEYLOCK SWITCHES

One of the more niche switch series we have on the market is the KO Keylock series. This key-lock switch serves a very specif function. As the name suggests, a key is used to turn and actuate the switch's function. Because of this feature, the KO Series is well suited for industrial applications. E-Switch offers almost 80 variants of the KO Series, each one with different specifications, number of positions, and overall functionality.





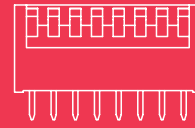
E-SWITCH®



ANTI-VANDAL



DETECTOR



DIP



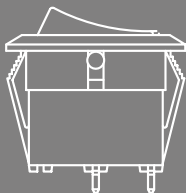
KEY LOCK



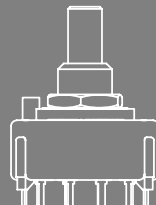
NAVIGATION



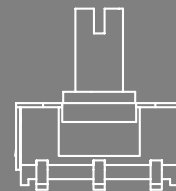
PUSHBUTTON



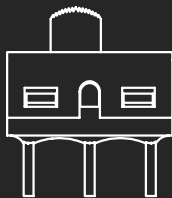
ROCKER



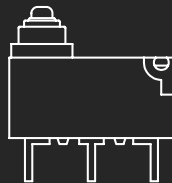
ROTARY



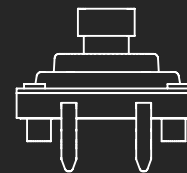
TACTILE



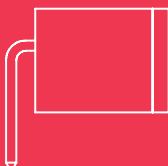
SLIDE



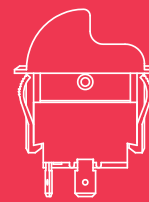
SNAP ACTION



TOGGLE



TILT



TRIGGER

2022 E-Switch, Inc. All rights reserved.

E-switch Inc. is a wholly-owned subsidiary of Stein Industries, Incorporated

www.e-switch.com